

Post COVID-19 Solutions **for K-12** Environments



Who We Are



Paul Klee
AIA, LEED AP
Principal



Alex Struble
NCIDQ
Interior Designer



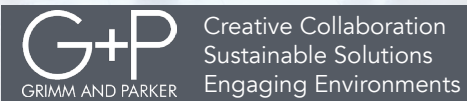
Jill Thomas
LEED GA
Designer



Laura Smyles
AIA
Associate



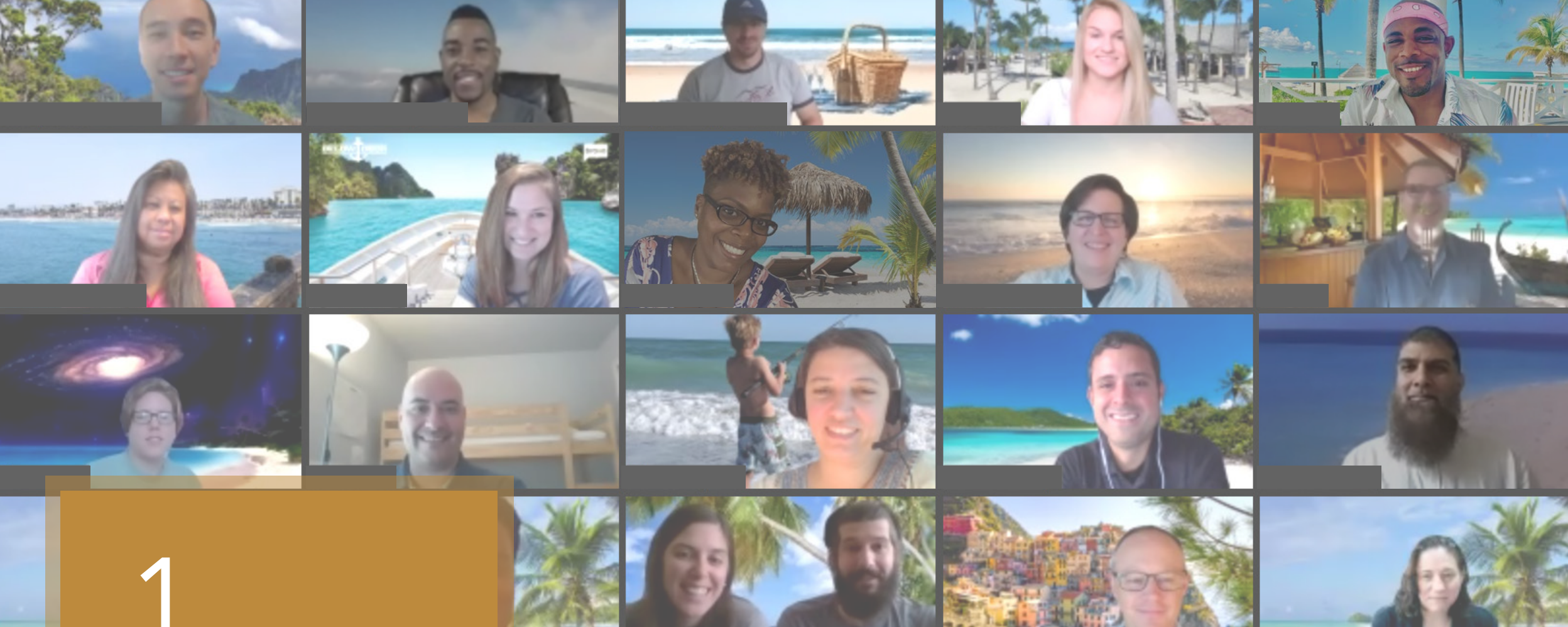
Dan Drake
PE, LEED AP
CMTA
Senior Mechanical Engineer



Creative Solutions Areas

- 1 Distance Learning
- 2 Play + Socialization
- 3 Social Distancing
- 4 Healthy Environments
- 5 Shared Objects and Spaces
- 6 Water Fountains + Food Service
- 7 Ventilation | Enclosed Spaces
- 8 Potential Long-term Solutions

*In response to the concerns of our clients, G+P assembled a **series of resources.***



1

Distance Learning

Mimic the Classroom
Reward Collaboration
Encourage Movement
Get Creative with Technology
Remain Mindful

52%

of parents think teachers have struggled to support their children's online learning²

To the best of your ability, **mimic the classroom.**



- Limit excess noise
- Keep a consistent lunch hour
- Set up your remote classroom away from the TV and other distractions
- Mimic recess with a mid-day walk

Reward students for **discovering safe ways to collaborate.**



Most creative mask competition¹



59%

If schools reopen in the fall, more than half of parents with school-aged children report **very or somewhat likely to switch to at-home learning**²

Grab a seat that allows for some movement.

It can increase attention span and concentration.



VS Jumper Air Active⁴



VS Hokki stool³

Get creative with **teaching technology.**



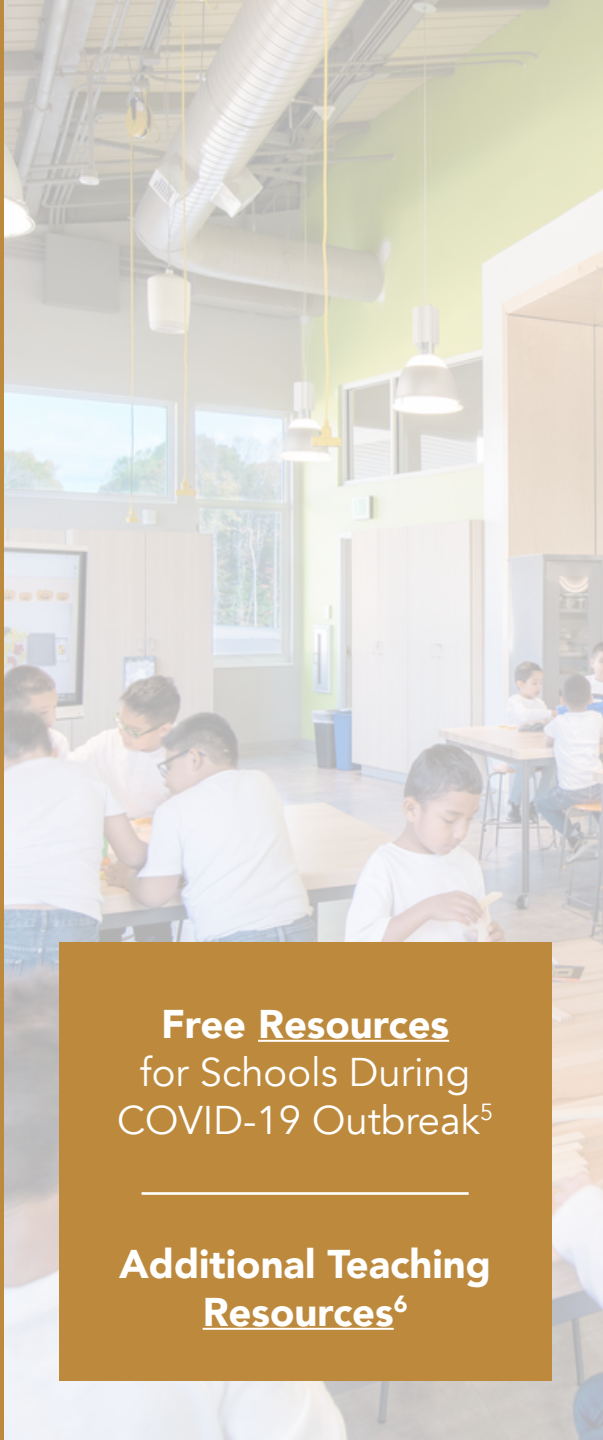
Virtual Whiteboard



Smart Pen⁸



Go Pro⁷



Free Resources
for Schools During
COVID-19 Outbreak⁵

**Additional Teaching
Resources⁶**

Remain Mindful.

Everyone's teaching and learning situation might look different right now.



WALKABOUTS
the active learning platform

ABCmouse.com
Early Learning Academy



150 YEARS | AMERICAN MUSEUM
OF NATURAL HISTORY

**The Science of
COVID-19**

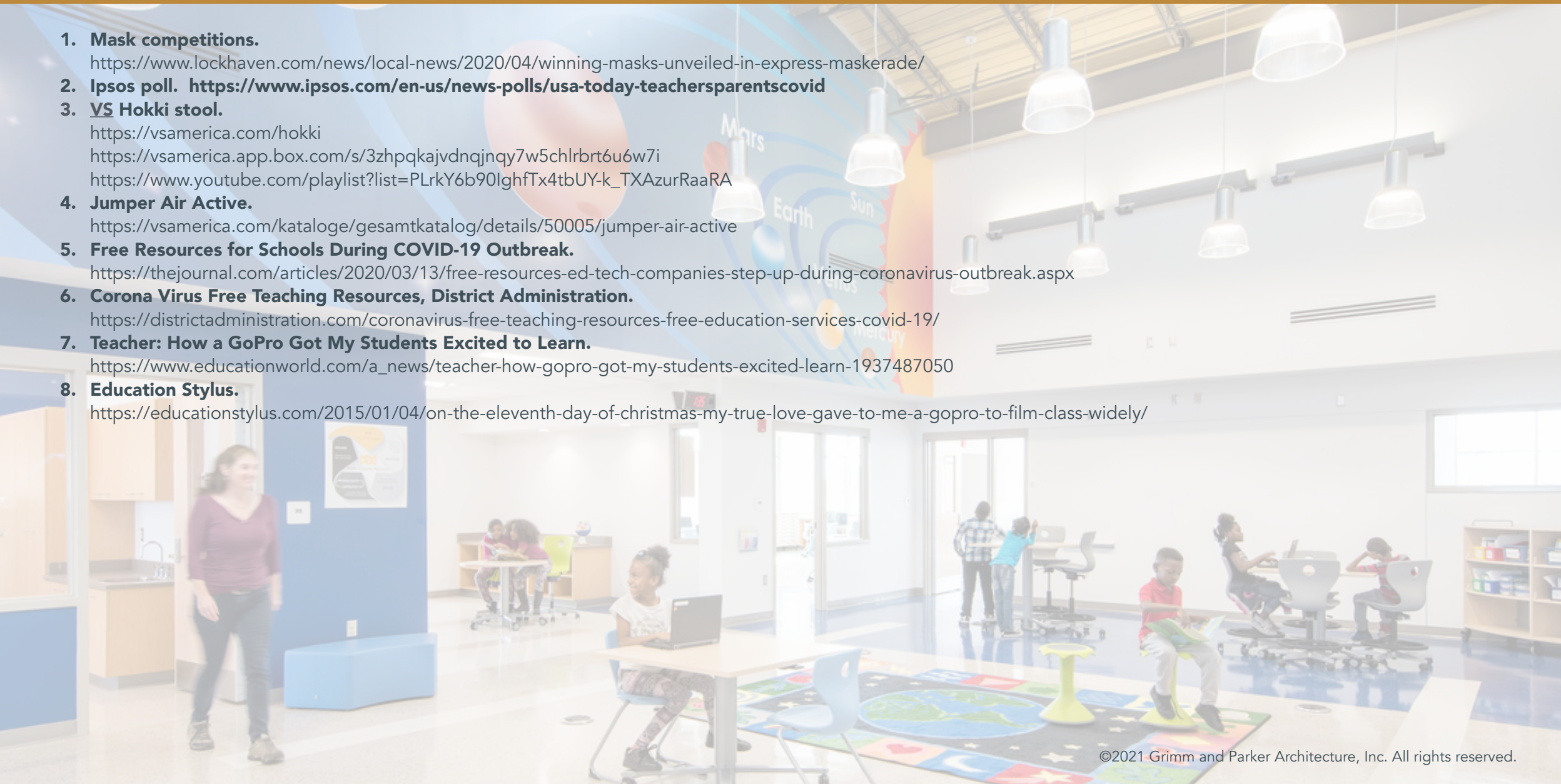
#SameHere

A mental health awareness initiative bringing together the education community, for the community and by the community when we all need it the most.

Distance Learning - References

1

- 1. Mask competitions.**
<https://www.lockhaven.com/news/local-news/2020/04/winning-masks-unveiled-in-express-maskerade/>
- 2. Ipsos poll.** <https://www.ipsos.com/en-us/news-polls/usa-today-teachersparentscovid>
- 3. VS Hokki stool.**
<https://vsamerica.com/hokki>
<https://vsamerica.app.box.com/s/3zhpqkajvndqjnqy7w5chlrbt6u6w7i>
https://www.youtube.com/playlist?list=PLrkY6b90lghfTx4tbUY-k_TxAzurRaaRA
- 4. Jumper Air Active.**
<https://vsamerica.com/kataloge/gesamtkatalog/details/50005/jumper-air-active>
- 5. Free Resources for Schools During COVID-19 Outbreak.**
<https://thejournal.com/articles/2020/03/13/free-resources-ed-tech-companies-step-up-during-coronavirus-outbreak.aspx>
- 6. Corona Virus Free Teaching Resources, District Administration.**
<https://districtadministration.com/coronavirus-free-teaching-resources-free-education-services-covid-19/>
- 7. Teacher: How a GoPro Got My Students Excited to Learn.**
https://www.educationworld.com/a_news/teacher-how-gopro-got-my-students-excited-learn-1937487050
- 8. Education Stylus.**
<https://educationstylus.com/2015/01/04/on-the-eleventh-day-of-christmas-my-true-love-gave-to-me-a-gopro-to-film-class-widely/>





2

Play + Socialization

Addressing Students' Social Needs
Fostering Engagement
Rewarding Students for Doing Good Deeds

“It’s important to our health, well-being and stress levels that we **don’t confuse the necessary physical distancing with social isolation...**

We all need each other and maintaining our social connections as much as we can is a must to functioning well through this crisis.”¹

Addressing Students’ Social Needs

Students who develop **ways to cope** with stress, emotions, feelings, and behaviors in different situations **are likely to do better academically.**



Fostering Engagement



Shadow Tag



Courtesy of Calgary Herald



Rewarding students for doing **good deeds.**



1. **Sally Anne Carroll.**
<https://parade.com/1011597/nicolepajer/ways-to-stay-social-coronavirus/>
1. **Addressing Social and Emotional Needs During COVID-19: Emerging Themes in School Reopening Guides.**
<https://www.ncsl.org/research/education/covid-19-addressing-social-and-emotional-needs-for-reopening-schools.aspx>
1. **Greater Good Magazine, How Schools Are Meeting Social-Emotional Needs During the Pandemic.**
https://greatergood.berkeley.edu/article/item/how_schools_are_meeting_social_emotional_needs_during_the_pandemic





3 Social Distancing

De-densify Communal Spaces
Re-thinking Outdoor Learning
Re-configuring Learning Spaces
Potential Investments

Generally, **classroom distancing** was found to be a top concern for public education professionals.

De-densify communal spaces.

Areas to consider:

- Dining Areas
- Gymnasium and Recreation Areas
- Collaborative Learning Zones
- Media Centers
- Circulation Space
- Vestibules



“Of course, reconfiguring non-instructional spaces for learning will be much simpler if schools have **flexible, agile furniture that is designed for easy manipulation, such as tables and desks on casters** and other furnishings that can be moved around and set up in various arrangements.”

- Rethinking School Spaces¹

"Wherever possible, **hold activities outdoors** and encourage participants to spread out...

hold **physical education and music classes** outside...

using visual cues to **demonstrate physical spacing.**"²

Rethink **outdoor learning spaces.**

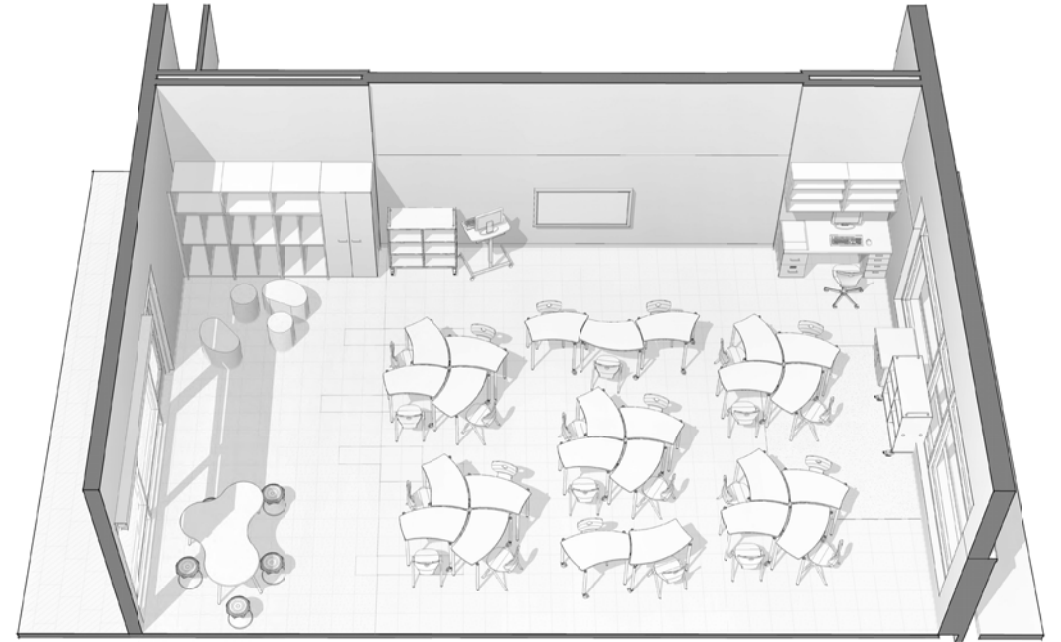


Reconfiguring Learning Spaces

Transitioning to **physically distant classrooms.**

BEFORE

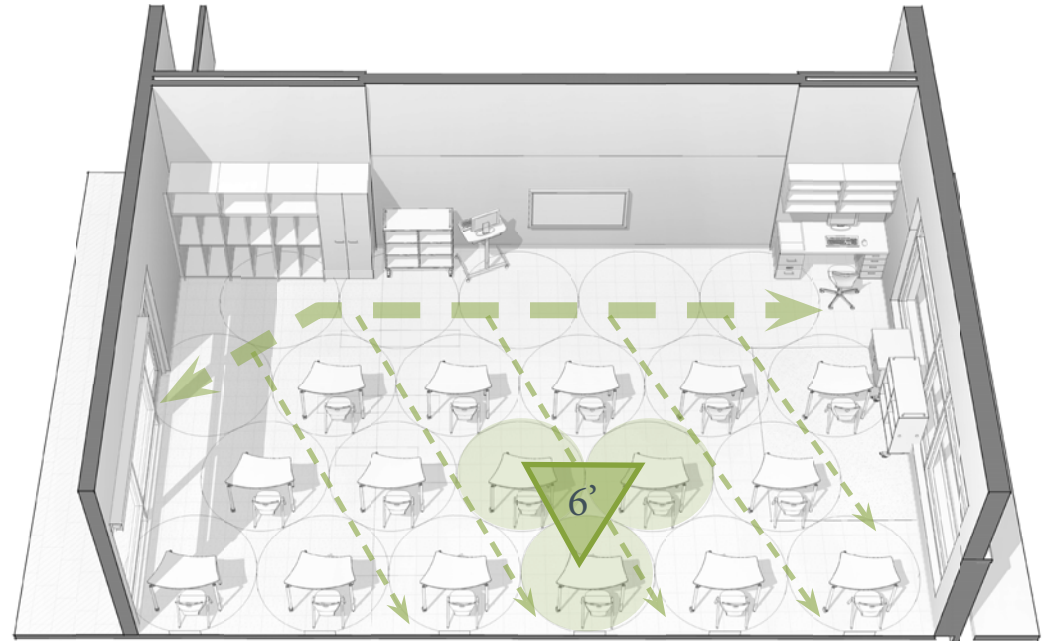
25 Students
individual desks
9 stools



AFTER

16 Students
individual desks

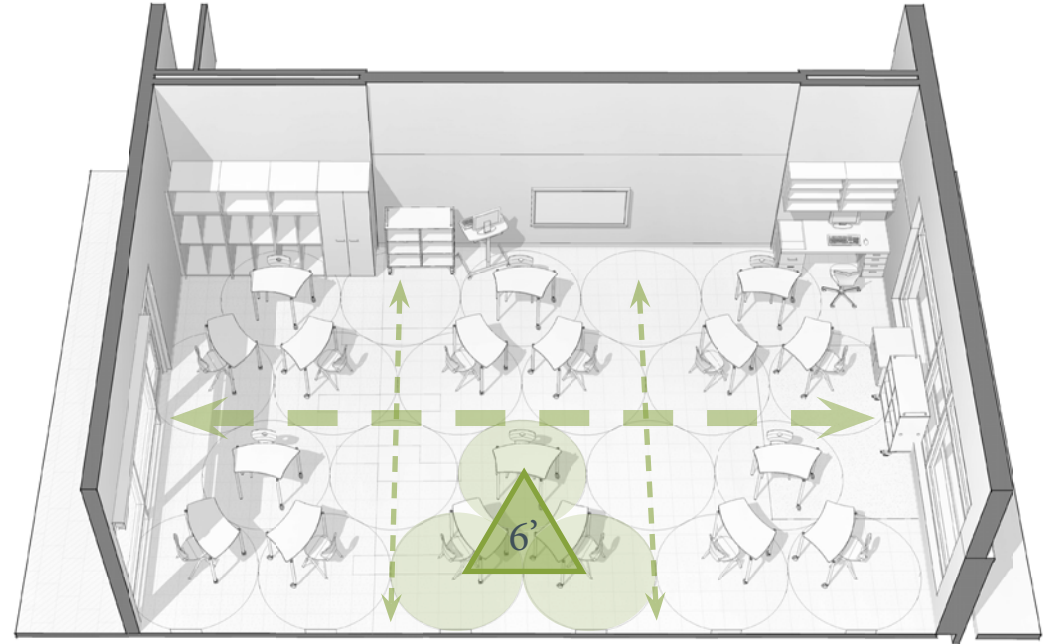
Hybrid approach where some students are remote learning and some students are in the classroom.



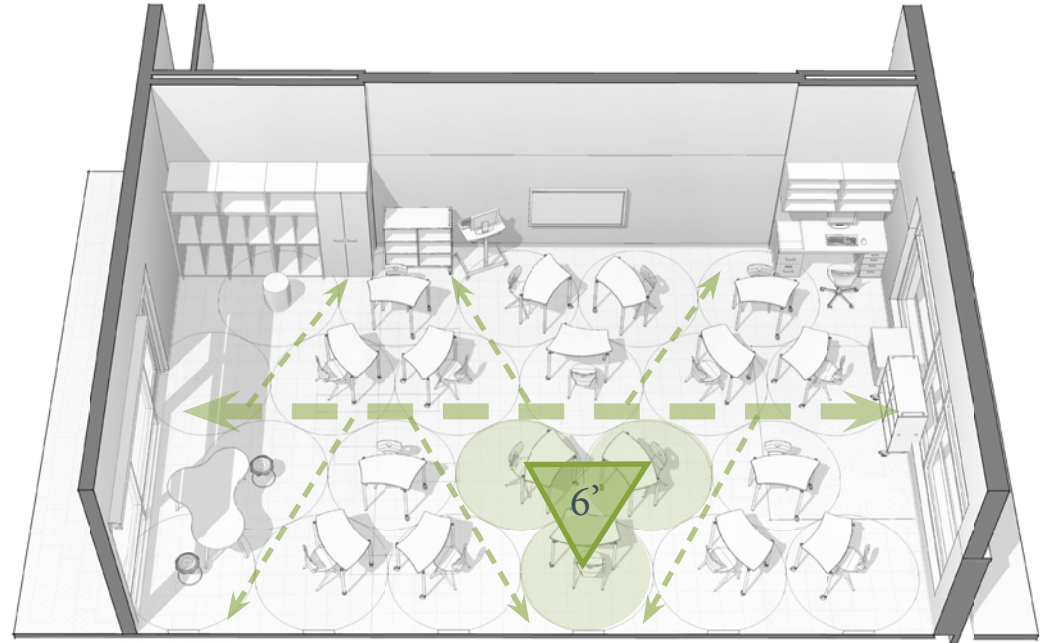
Reconfiguring Learning Spaces

Physical distance allowing **small group collaboration.**

18 Students
individual desks

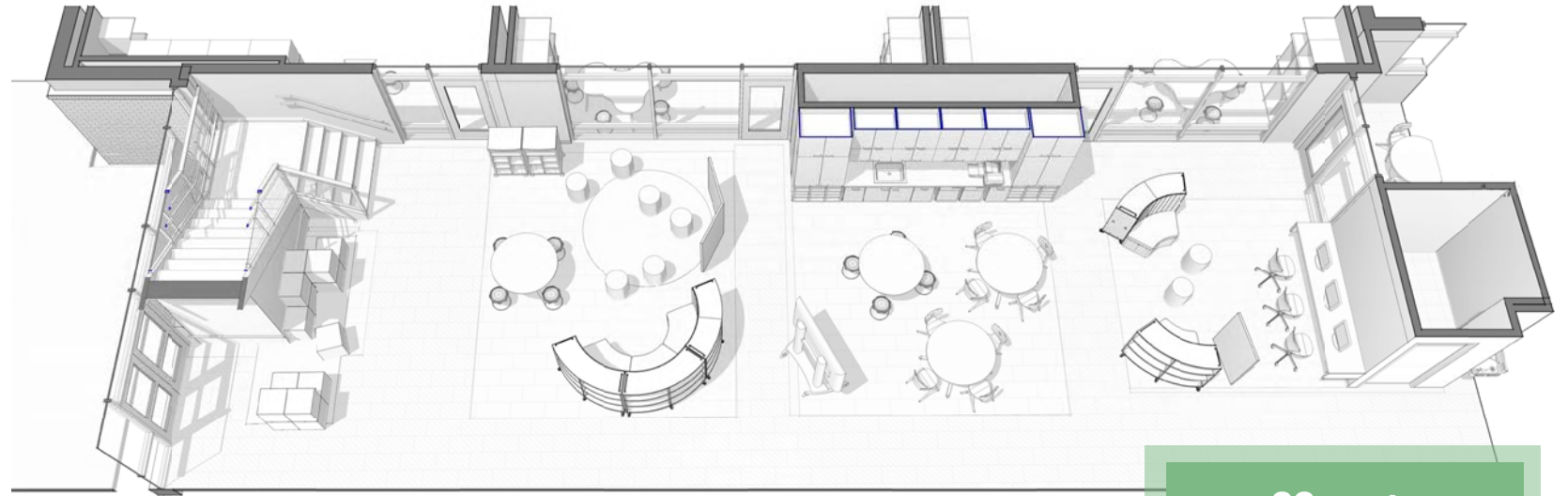


18 Students
individual desks
3 stools



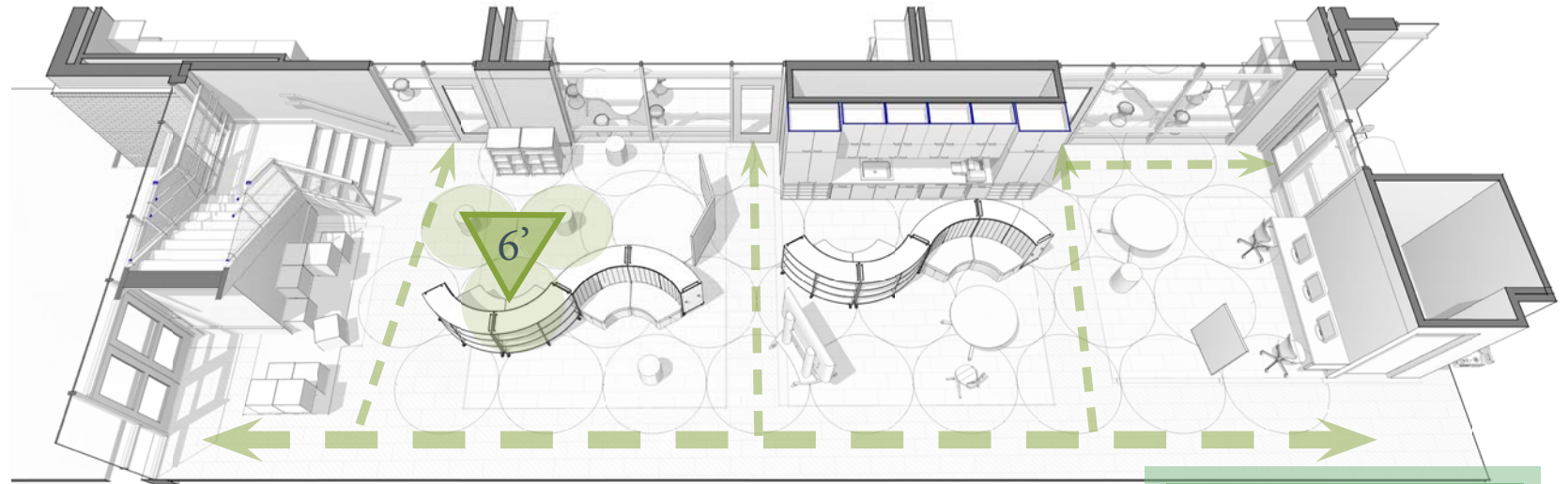
Reconfiguring Learning Spaces

Utilizing **collaborative learning zones** adjacent to classrooms.



BEFORE

33 seats
19 spots with table

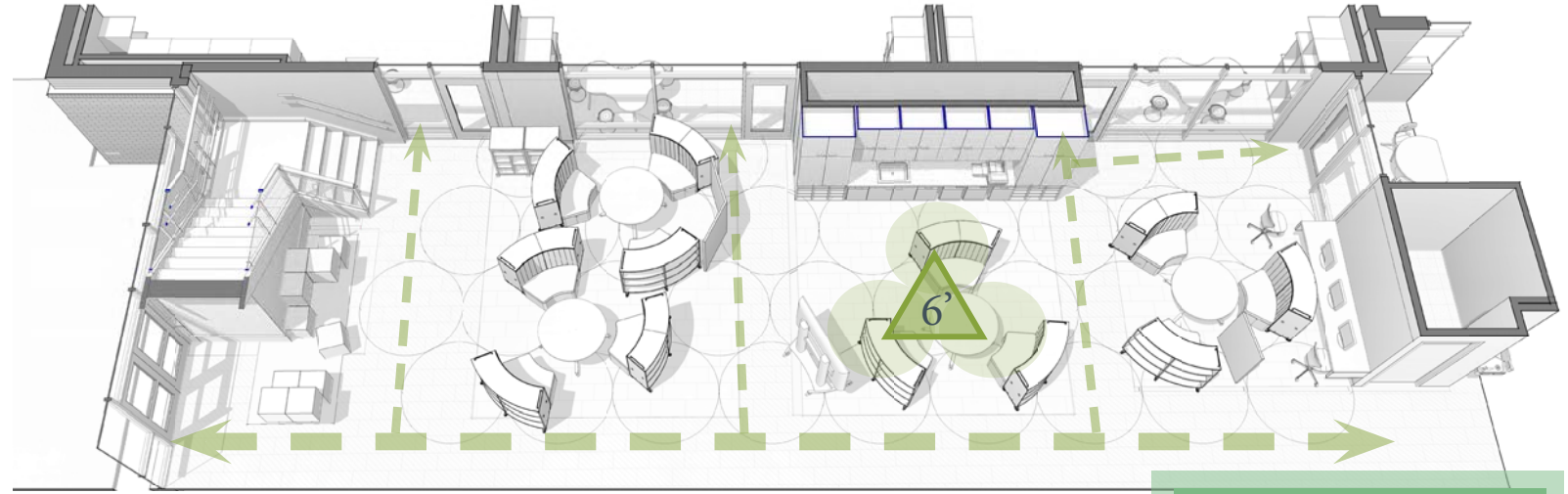


AFTER

12 seats
5 spots with table

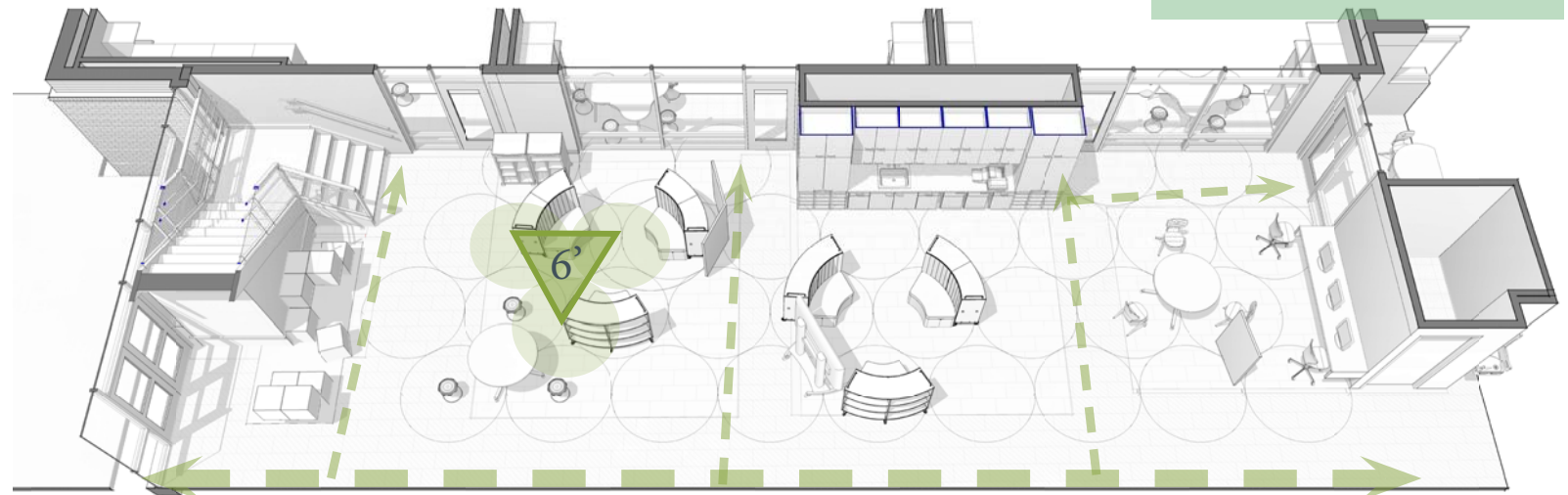
Reconfiguring Learning Spaces

Collaborative Learning Zone layout options.



AFTER

14 seats
14 spots with table



AFTER

14 seats
8 spots with table

68%

of parents say their child would find it **difficult to follow social distancing guidelines** at school.⁷

Potential Investments

Self-study Areas and Tutoring Cubicles



Agati
Nook study carrels⁴



Agati
Pod study carrels⁴



OFS Agile⁵



Vanerum
Privacy pod⁶





For a more cost effective solution, use **mobile storage and mobile marker boards** to temporarily divide space.

Potential Investments

Screening devices and other furniture solutions can provide a protective barrier to allow collaboration.



Takeform
Adjoir Freestanding Partitions¹⁰



VS America
Serie 2000 Mobile Room Dividers¹²



Screenflex
dividers⁸



Steelcase
Separation Screens¹¹

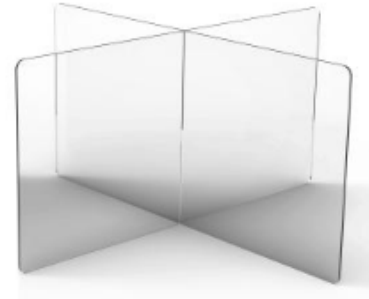


Mooreco Essentials
Mobile Clear Divider⁹



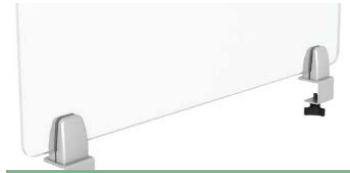
Potential **Investments**

Screening devices and other furniture solutions can provide a protective barrier to allow collaboration.



Interstate
plastics table dividers¹⁶

- KI
- All Terrain Screens
- Universal Height-Adjustable Screens
- Tattoo Screens
- Connection Zone Marker
- Surface Screens¹⁵



SI
Spacesaver Interiors¹³



Openingthebook¹⁴





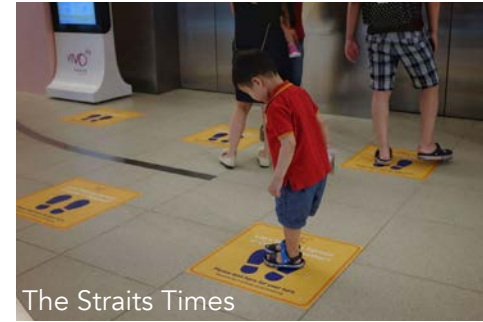
The CDC has provided numerous **print and digital resources** for public use:

[Print Resources](#)¹⁷
[Social Media Toolkit](#)¹⁸

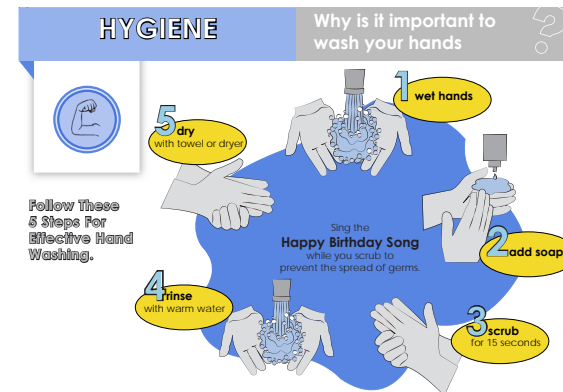
Potential Investments

Graphics can be friendly, visual cues to effect behavior.

They can also be used to promote student understanding.



The Straits Times



- 1. Rethinking School Spaces and Structures to Maintain Proper Distancing Amid COVID-19**
Spaces4Learning.com
- 2. Social Distance.**
<https://www.health.state.mn.us/diseases/coronavirus/schools/socialdistance.pdf>
- 3. Danish Children Are Heading Back to School – Here’s What it Looks Like.**
<https://www.weareteachers.com/denmark-reopening-schools/>
- 4. Agati Pod study carrels + Nook study carrels.**
- 5. OFS Agile.**
<https://ofs.com/products/open-plan/workstations/agile>
- 6. Vanerum pod privacy.**
<https://vanerumna.com/product/privacy-pod/>
- 7. USA Today | Ipsos Poll to parents of K-12 children in the U.S.**
- 8. Screenflex dividers.**
<https://www.screenflex.com/markets/healthcare/>
- 9. Mooreco Essentials Mobile Clear Divider.**
<https://moorecoinc.com/product/essentials-mobile-clear-divider/>
- 10. Takeform Adjoin Freestanding Partitions.**
- 11. Steelcase Separation Screens.**
<https://www.steelcase.com/products/screens/separation-screens/>
- 12. VS America Serie 2000 Mobile Room Dividers.**
<https://vsamerica.com/kataloge/gesamtkatalog/7058/screens/>
- 13. SI Spacesaver Interiors.**
<https://ss-usa.s3.amazonaws.com/c/308479411/media/16215ed56d21285cb07289126240587/SpacesaverInteriors-Acrylic-Dividers.pdf>
- 14. Opening the Book.**
openingthebook.com
- 15. KI.**
<https://www.ki.com/products/category/accessories/screens/>
- 16. Interstate plastics table divider.**
<https://www.interstateplastics.com/Portable-Divider-Wall-Sneeze-Guard-Office-Table-Dividers-Sheet-MSCEADIVIDERWSLT.php>
- 17. Print Resources.**
<https://www.cdc.gov/coronavirus/2019-ncov/communication/print-resources.html?Sort=Date%3A%3Adesc>
- 18. Social Media Toolkit.**
<https://www.cdc.gov/coronavirus/2019-ncov/communication/mental-health.html>



4

Healthy Environments

Reinforcing Healthy Habits
The Built Environment



Reinforcing Healthy Habits



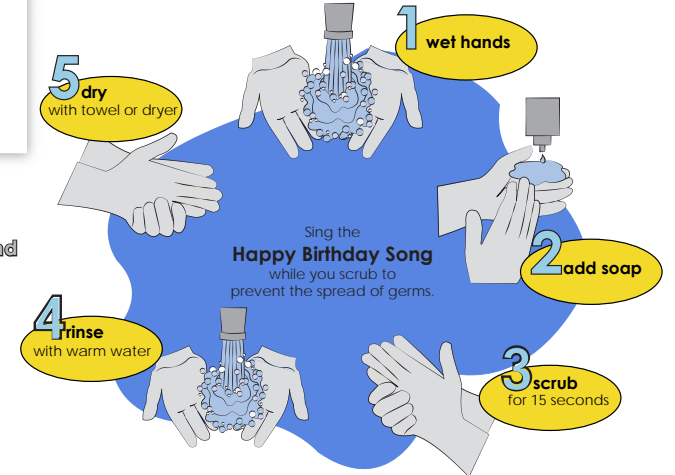
Graphics Printing [Resource](#)¹

HYGIENE

Why is it important to wash your hands



Follow These 5 Steps For Effective Hand Washing.



www.thinglink.com

Hand washing educational signage
(From Discovery STEM Academy)²
[Link for download](#)



The Built Environment



Snowden Farm Elementary School



Tarkett Microtone Rubber Tile³



FlashCove Prefabricated Base⁴



Aquaterior 5" Auto Sensor Faucet⁵

1. **Sinalite.**

<https://www.piworld.com/article/sinalite-pre-designed-social-distancing-floor-graphics/>

2. **Discover STEM Academy.**

<https://vsamerica.com/case-studies/discovery-stem-academy>

3. **Tarkett.**

https://commercial.tarkett.com/en_US/collection-C000402-microtone-rubber-tile

4. **FlashCove.**

<https://flashcove.com/prefabricated-base/>

5. **Aquaterior.**

<https://aquaterior.com/collections/bathroom-faucets/products/aquaterior-5-auto-sensor-brushed-nickel-bathroom-faucet>





5

Shared Objects, Shared Spaces

Understanding Processes - Case Study: Frederick County
Personal Student Storage
Technological Devices
Flexible Dining
Emergency Protocol



Personal
Student Storage



Desks with hooks¹



Cubbies with closed fronts²



MooreCo hooks³

Technological Devices



Hamilton LTT-10 Hamilton 10 Port
USB Charging Station⁴



Wire Management ConnecTrac
On-floor wireway⁵



ChargeTech Floor Stand
Charging Station⁶



Flexible Dining

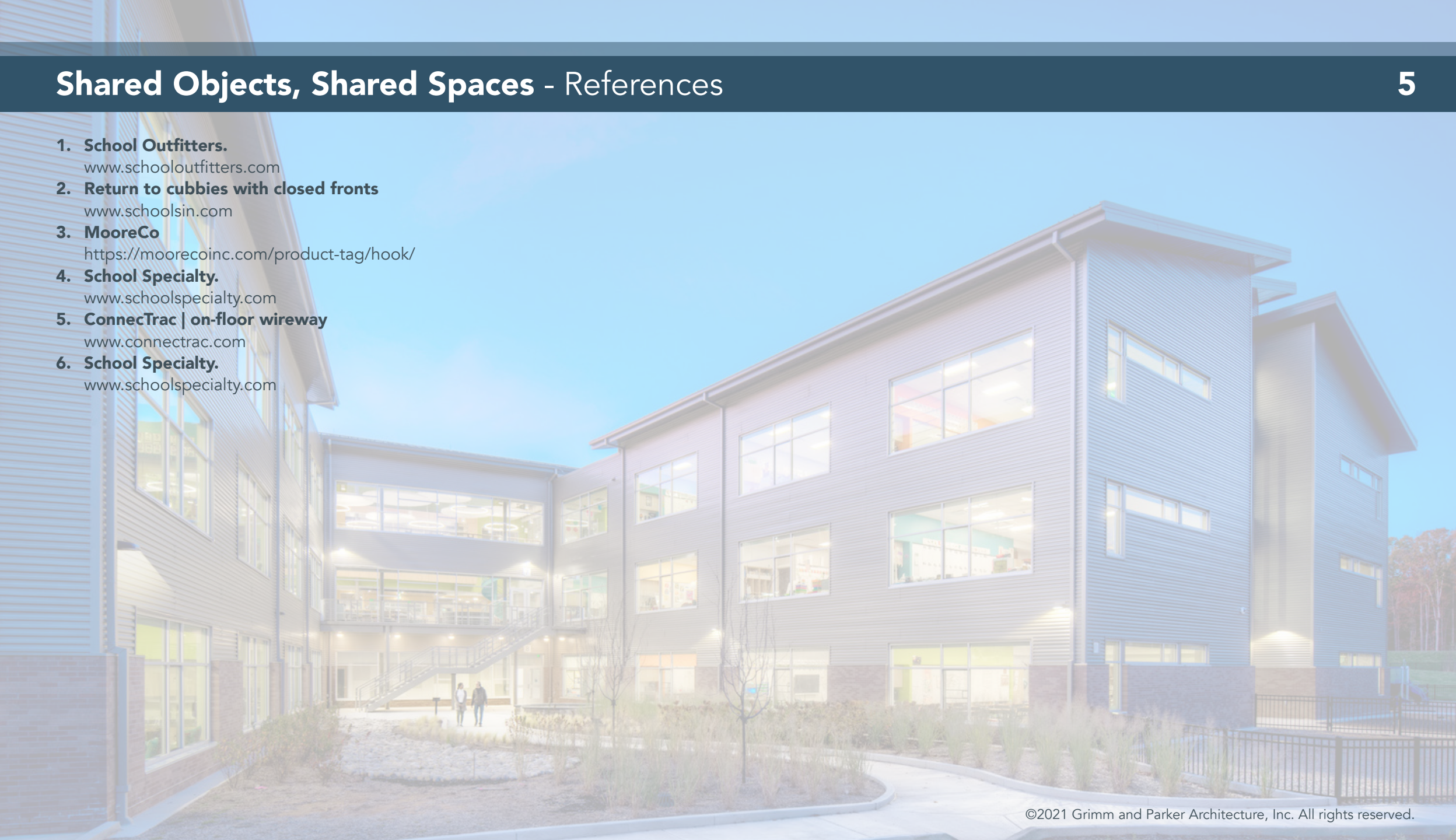




Emergency Protocol



1. **School Outfitters.**
www.schooloutfitters.com
2. **Return to cubbies with closed fronts**
www.schoolsin.com
3. **MooreCo**
<https://moorecoinc.com/product-tag/hook/>
4. **School Specialty.**
www.schoolspecialty.com
5. **ConnecTrac | on-floor wireway**
www.connectrac.com
6. **School Specialty.**
www.schoolspecialty.com





6 Food Services

Food Hygiene
Food Distribution
Wraparound Services



Food Hygiene



Sneeze guard
Star Manufacturing¹



Single Deck Classic Cafeteria Breath Guard
Vollrath N37312 Nsf2 (2011)²

Food Distribution



Courtesy of Dennis Express



Hot and cold food delivery cart³

Wraparound Services



Read on:

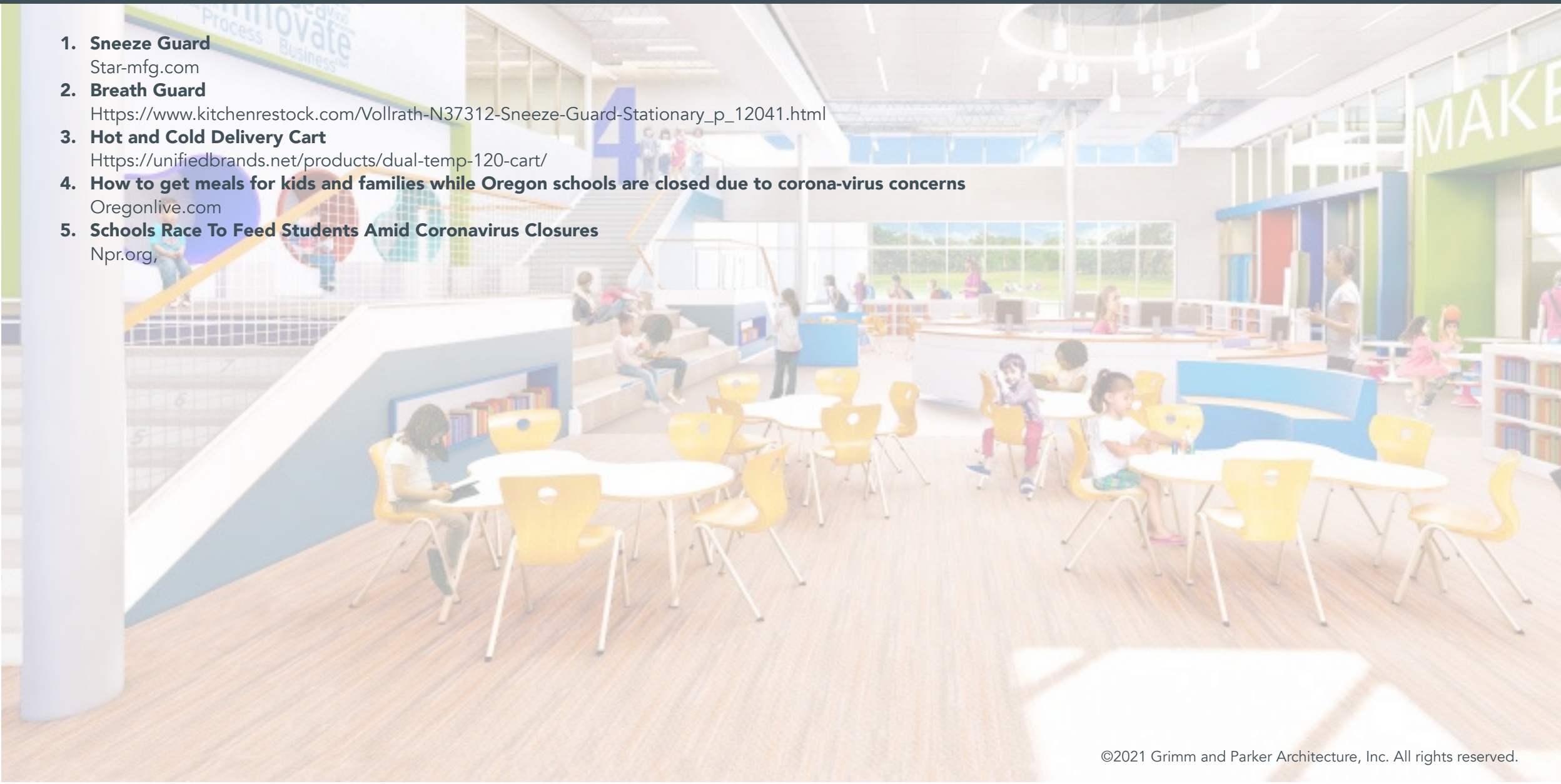
How to get meals for kids and families while Oregon schools are closed due to corona-virus concerns⁴



Images courtesy of: npr.org, Schools Race To Feed Students Amid Coronavirus Closures⁵



1. **Sneeze Guard**
Star-mfg.com
2. **Breath Guard**
https://www.kitchenrestock.com/Vollrath-N37312-Sneeze-Guard-Stationary_p_12041.html
3. **Hot and Cold Delivery Cart**
<https://unifiedbrands.net/products/dual-temp-120-cart/>
4. **How to get meals for kids and families while Oregon schools are closed due to corona-virus concerns**
Oregonlive.com
5. **Schools Race To Feed Students Amid Coronavirus Closures**
Npr.org,





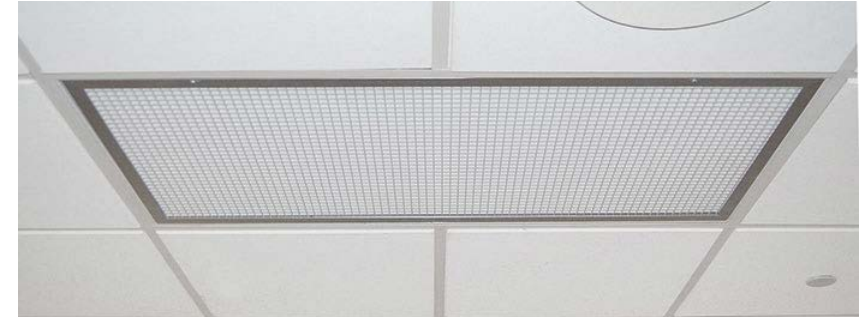
7 Ventilation and Enclosed Spaces

Improved Ventilation
Disinfecting with UV-C Light

"...We can enlist buildings to help us in this fight... when classrooms used portable air purifiers to supplement the building systems, **there was a 50 per cent reduction in the relative risk of transmission (of measles).**"¹

Improved Ventilation

HEPA filtration, as used in hospitals, can filter out a COVID particle.



www.hfmmagazine.com



airshowertunnel.com



www.qeinternational18.com

More on this topic from [ASHRAE](#)²

- Can HEPA Air Purifiers Capture the Corona-virus? 7 April 2020 - **Tim Heffernan**
- Joe Snider, Could indoor air quality become part of the post corona-virus play-book? - **GreenBiz**
- Ventilation is key to reducing Covid-19 spread - **Cooling Post**
- COVID-19 Outbreak Associated with Air Condition in Restaurant, Guangzhou, China, 2020
- **Centers for Disease Control and Prevention**
- **MFM**, Five Ways to Improve Building Ventilation

With so much information out there about UV, we reached out to CMTA engineers as a trusted resource.

Get all your questions answered:

[IES Committee Report³](#)

Disinfecting with **UV-C Light**

UV-C light can be generated via filtered excimer lamps.

It has proven to act as a powerful germicide (ultraviolet germicidal irradiation).

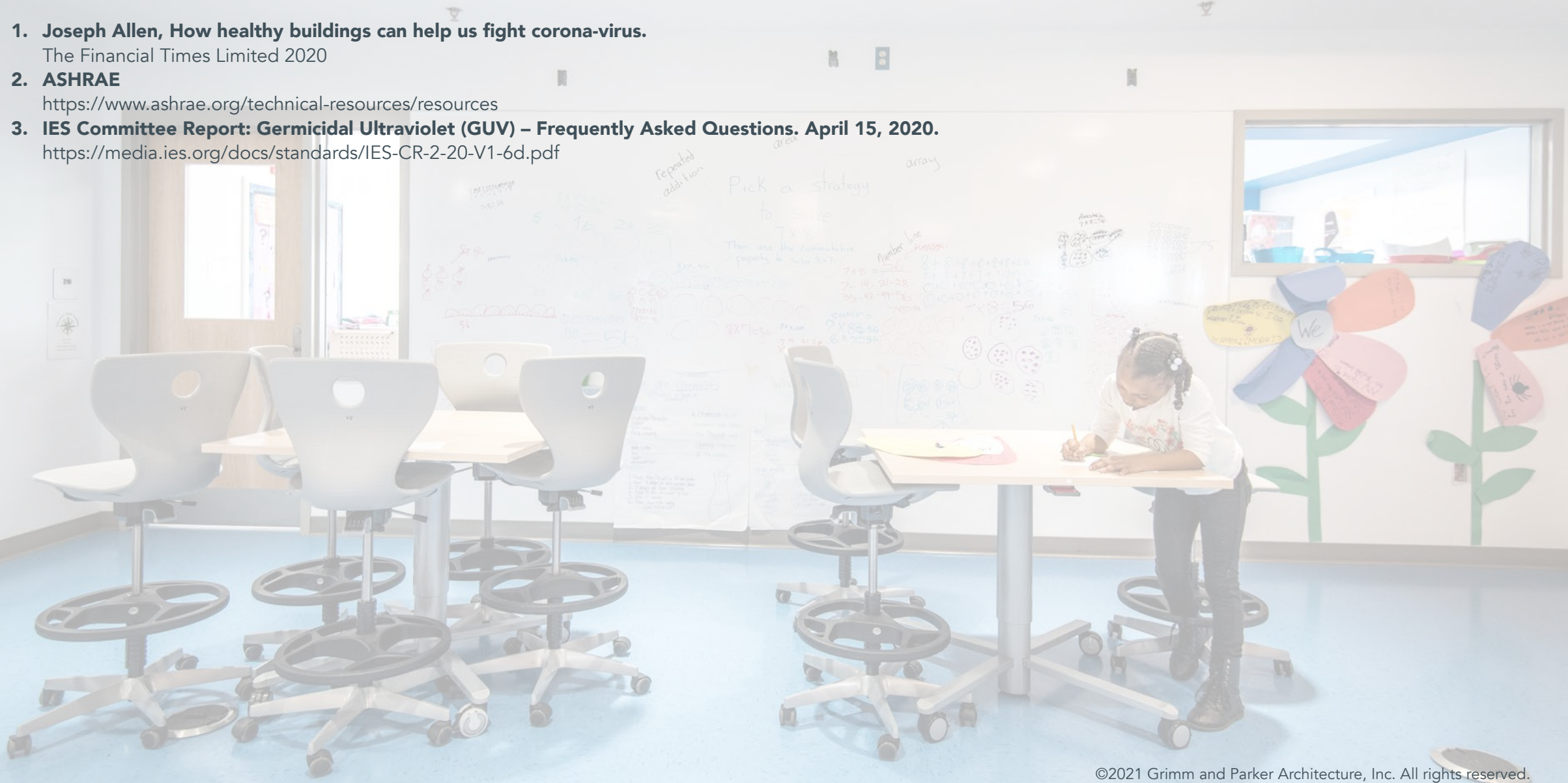


www.buddgroup.com



www.spec-net.com.au

1. **Joseph Allen, How healthy buildings can help us fight corona-virus.**
The Financial Times Limited 2020
2. **ASHRAE**
<https://www.ashrae.org/technical-resources/resources>
3. **IES Committee Report: Germicidal Ultraviolet (GUV) – Frequently Asked Questions. April 15, 2020.**
<https://media.ies.org/docs/standards/IES-CR-2-20-V1-6d.pdf>





8

Potential Long-term Solutions

Building Solutions
Interiors Solutions



Building Design

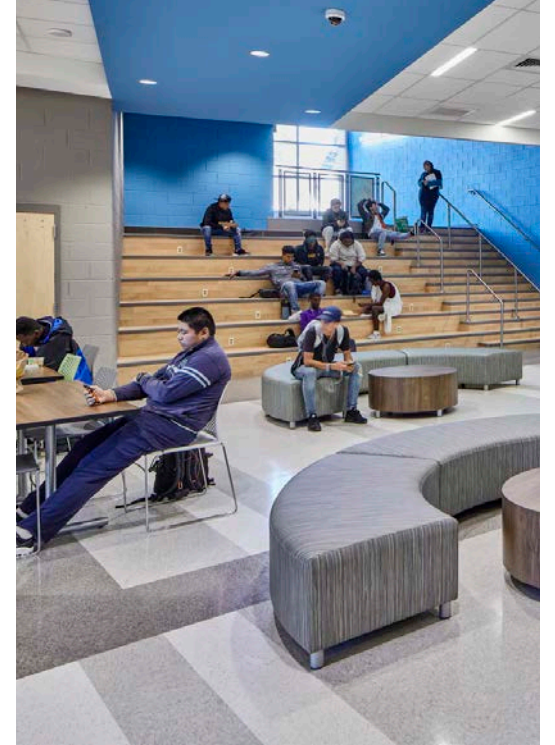
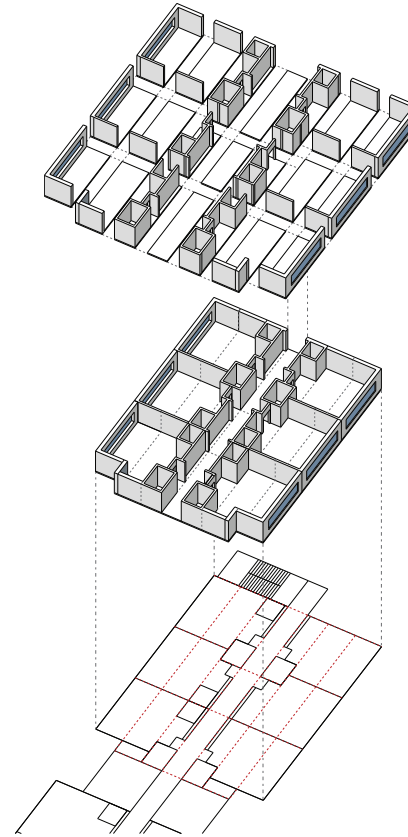
Flexible Building Design

Adaptive Reuse

Promoting **INNATURE** experiences

Modular Construction

Lightweight Architecture





Interior Design

Space planning, Circulation and Programming

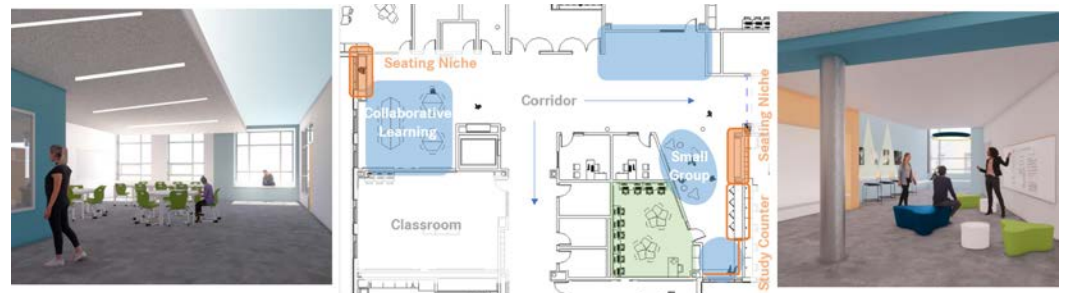
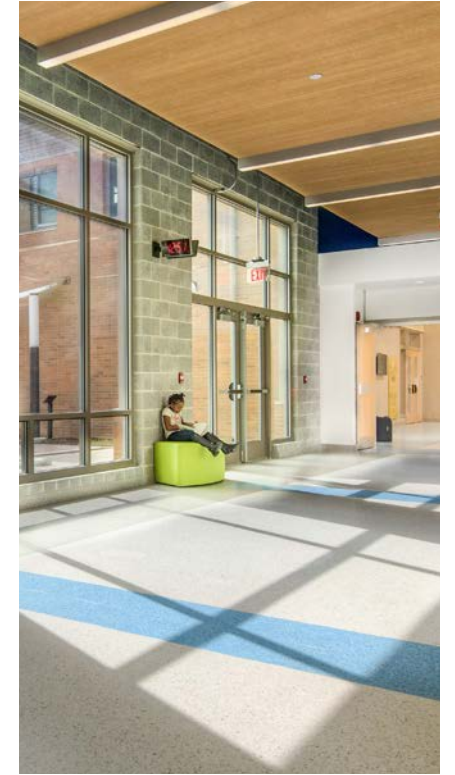
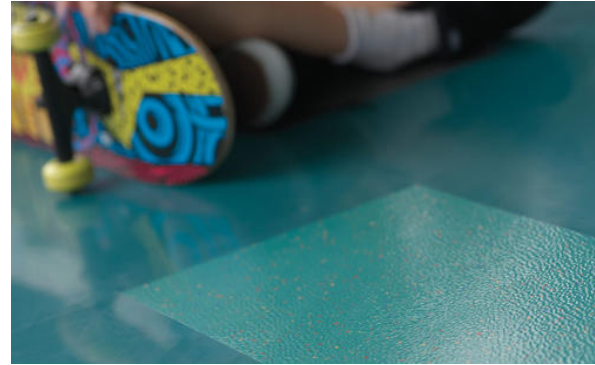
Larger Learning Spaces

Antimicrobial Interior finishes

Color Trends Design solutions that positively impact socio-emotional learning & provide stimulating colors and textures in finishes and surface materials.

Biophilic Design – connections to the natural environment

Scaling of Spaces





Let's
explore
together.

www.grimmandparker.com/our-insights/

Content developed with special thanks to:

Paul Klee AIA, LEED AP, Partner
Dave Whale AIA, LEED AP, Partner
Kathleen O'Hearn AIA, LEED BD+C, Senior Associate
Alex Struble NCIDQ, Interior Designer
Jill Thomas LEED GA, Designer
Laura Smyles AIA, Associate
Houda Boudjemaa, Senior Associate
Antonio Rebelo AIA, IIDA, Partner, Director of Design
Julia Crawford, NCIDQ, LEED AP, VP, Director of Interior Design
Maria F. Farieta, Architecture Intern
Kat Schooley ALEP, Associate
Jill Burcky, Principal, Director of Marketing
Dan Drake PE, LEED AP, CMTA, Senior Mechanical Engineer



©2021 Grimm and Parker Architecture, Inc. All rights reserved.